

KL-21 B

HIGH PRECISION FIBER CLEAVER

■ Usage and safety regulation

- Before using fiber cleaver, please read this manual carefully
- Be cautious to use in case harm:
- Do not touch the blade with hand when use or repair
- Do not take down or oil
- Keep away from humid and dusty environment

I Technical specifications

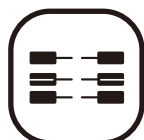
Applicable range	Single core silex-fiber
Coating diameter	q 0.25mm & q 0.9mm
Fiber diameter	125U m
Cleave length	9 ~ 16mm (q 0.25) 10 ~ 16 (q 0.9)
Dimension	59mm (W) * 55mm(D)* 49mm(H)
Weight	255g
Cleaving angle	< 0.5°
Blade life	12000 times



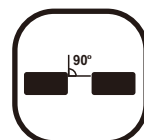
Hand held
design



48000
blade life



Double
fiber holders



<0.5*
cleaved angle



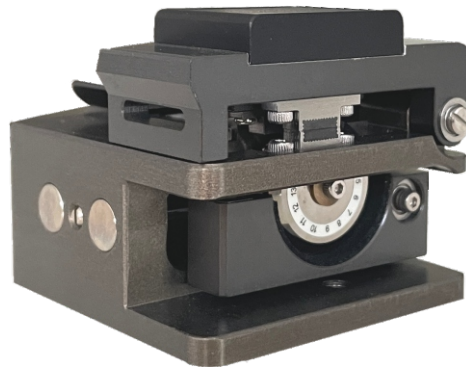
Fiber
offcut bin

KL-21 B

HIGH PRECISION FIBER CLEAVER

II Operation procedure

- Facing the blade shelf and open the big pressboard and small pressboard (see figur I)
- Use the stripper to strip the coating of fiber, reserve 30 - 40mm bare fiber, use pledget which is dipped by absolute alcohol to cover and clean the fiber, avoid using the same pledget twice
- Align the stripped fiber with calibration and put it into V-groove and make sure that the bare fiber is sticking out of the rubber pad exactly in a straight line.
- Close the pressboard and push the blade shelf to another side to cut the fiber.
- Hold the cleaver with left hand, open the big pressboard with right hand and clean the fiber chip.
- Use lift hand to hold the fiber and open the small pressboard with right hand, remove the cleaved fiber carefully without touching the end face.



III Maintenance

1. Clean the pressboard and blade :

Usually use cotton with anhydrous alcohol to clean the rubber surface of big pressboard, edge of blade the rubber pad.

2. Blade height adjustment :

Usually don't need to adjust the blade height, please operating as following steps when does not work well :

- Push the blade shelf to another side to make the screw II align the aperture on the bottom of cleaver, then release screw II with wrench.
- Revolve the adjust axle in the middle of blade shelf deasil slightly (see figur 2).
- Lock screw II and I tightly. (Screw II fix adjust axle and screw I fix blade).
- Repeat above steps till blade is in proper position.

3. Blade position adjustment :

- Release screw I on the blade shelf. (See figure 2)
- Cleaver revolve 45 degree, insert sharp thing into operation aperture and revolve the blade to make blade on the point of 1 - 12 or 1 - 16.
- Press the blade with finger and lock screw I tightly.

KL-21 B

HIGH PRECISION FIBER CLEAVER

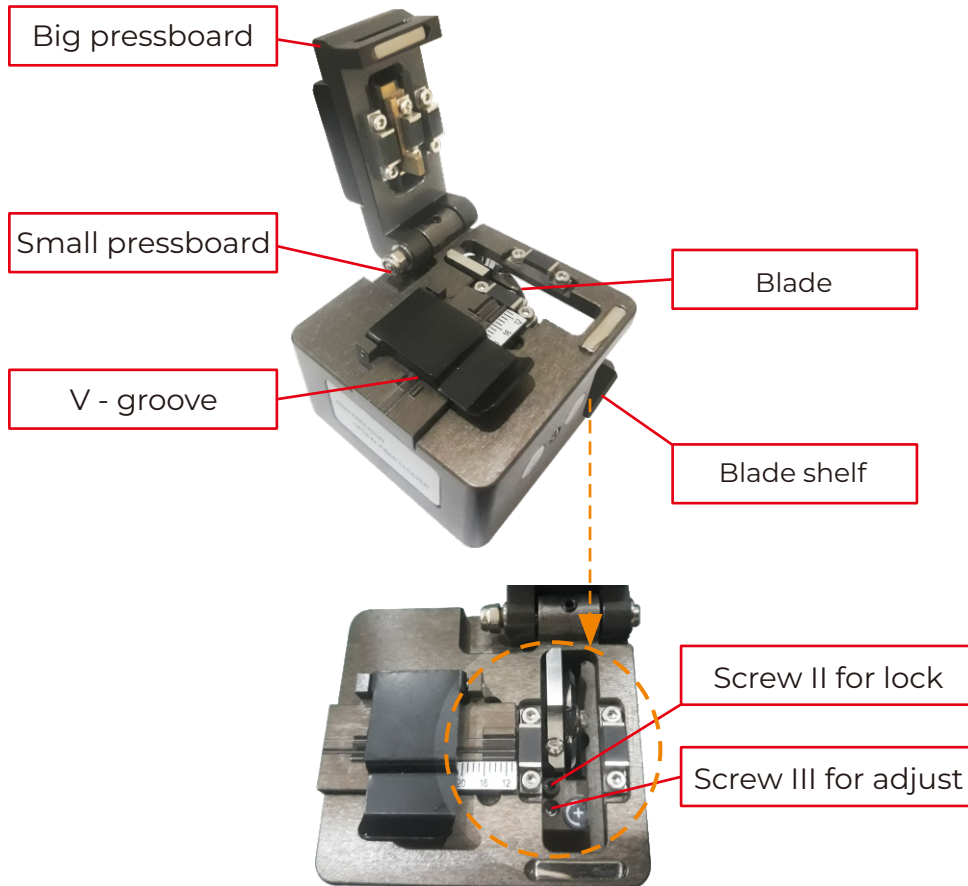
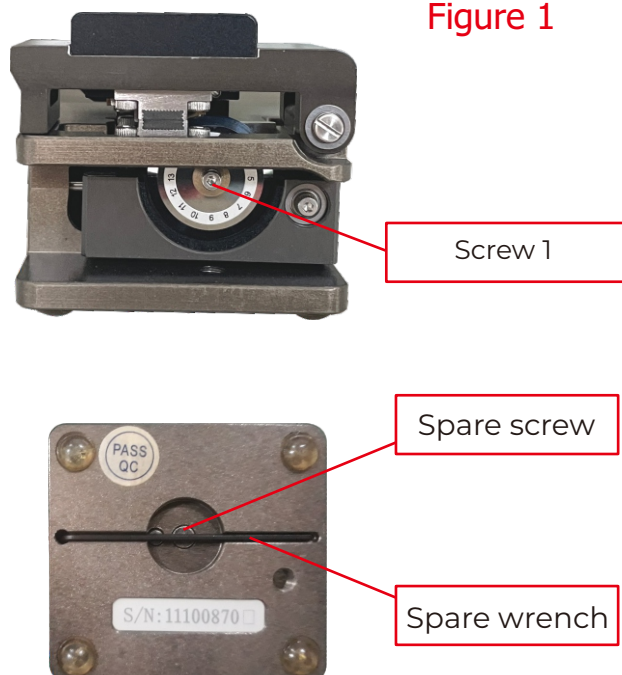


Figure 1



KL-21 B

HIGH PRECISION FIBER CLEAVER

4. **Blade adjustment :**

- If could not cut the fiber very well :
The blade is on low position and please adjusts the blade height as above steps.
- If the fiber has breakage and there is adumbration on the end-surface of fiber or too large fiber angle :
The blade is on high position and please adjusts the blade height as above steps.
- If there is large oblique angle when blade is on low or high position. there is adumbration on the end - surface and please observe from another direction.
- Please contact us if above methods could not ameliorate the cleaving quality

4. **Blade reusing :**

Blade is regularly round, any point of it can cut for 1000 times theoretically, this any point between 1 -12 or 1 - 16 can be chosen for cutting.

When all the points 1 -12 or 1 - 16 have been used, adjust the blade to a higher position referring to blade height adjust ment to reuse the blade for another circle.

5. **Blade reusing :**

Blade is regularly round, any point of it can cut for 1000 times theoretically, this any point between 1 -12 or 1 - 16 can be chosen for cutting.

When all the points 1 -12 or 1 - 16 have been used, adjust the blade to a higher position referring to blade height adjust ment to reuse the blade for another circle.

6. **Blade replacement**

- Release screw II and I, pull out the adjust axle (see figure 2).
- Release the screw of blade shelf, lean down the cleaver 45 degree and put the new blade shelf.
- Push the adjust axle into the central aperture or revolve adjust axle with screw driver and then align position I up to lock the screw.
- Put the coating fiber in the q 0.9 groove to adjust blade height, revolve adjust axle to make blade touch the fiber, then adjust half calibration to proper position and lock screw I and II tightly.

Special carrying case

The card slot in the box is designed to effectively protect the cleaver body from damage



Product display

